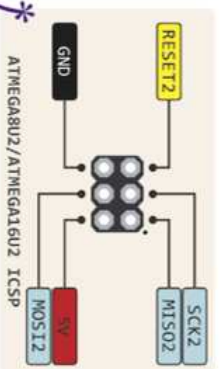


THE DEFINITIVE ARDUINO MEGA PINOUT DIAGRAM

1 7-12V Depending on current drawn

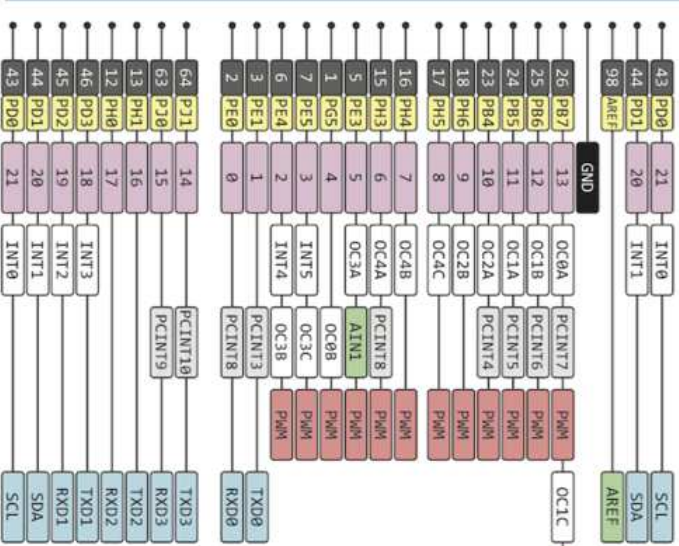
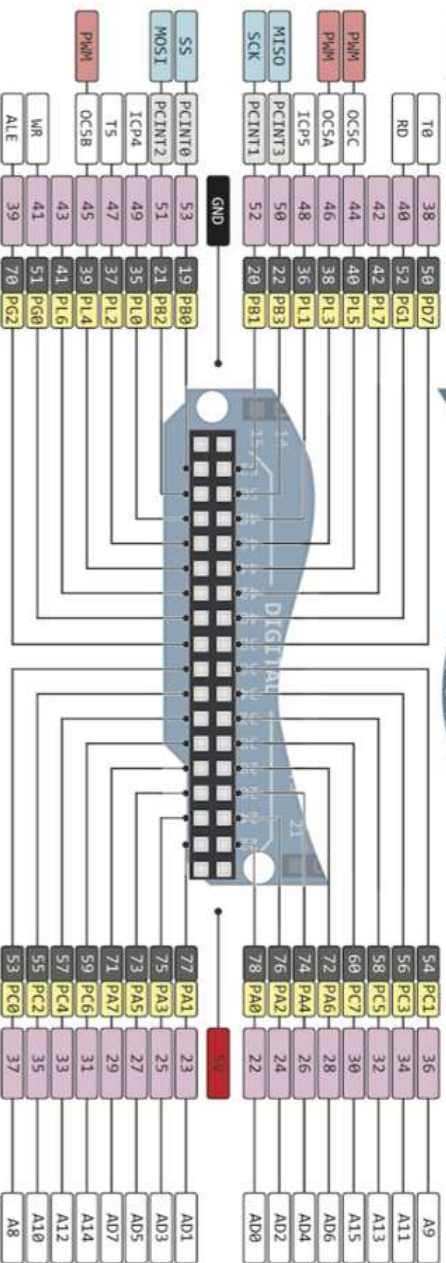
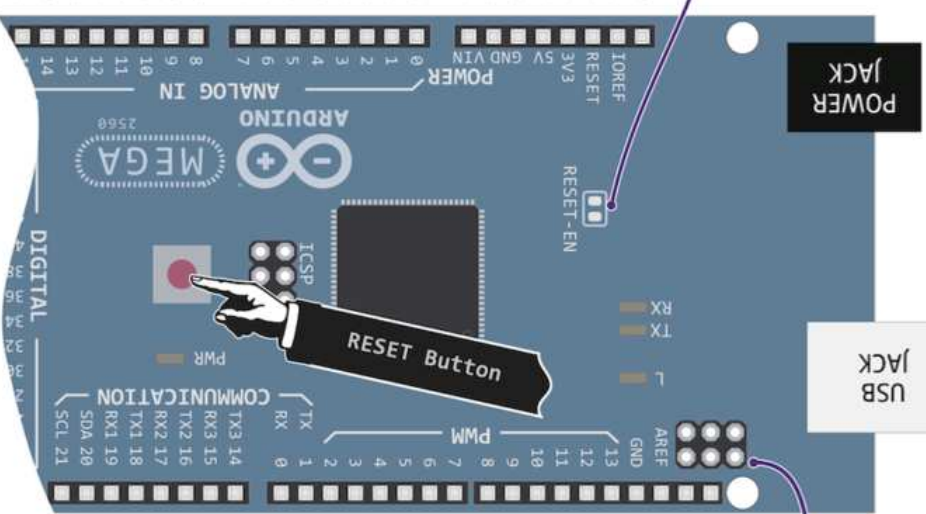
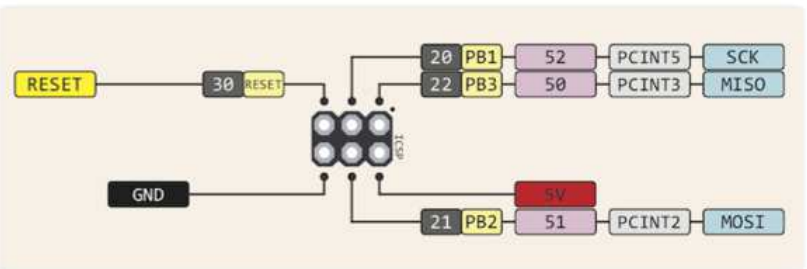
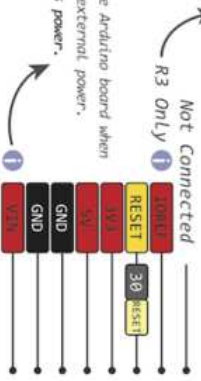


USB JACK TYPE B



Cut to disable the auto-reset
This provides a logic reference voltage for shields that use it. It is connected to the 5V bus.

The input voltage to the Arduino board when it is running from external power. Not USB bus power.



Connected to the ATmega and used for USB program and communicating with it

www.pjphxxx.com
13 MAR 2013
ver 2 rev 0 - 13.03.2013

⚠ Absolute max per pin 40mA
⚡ Absolute max 200mA for entire package

