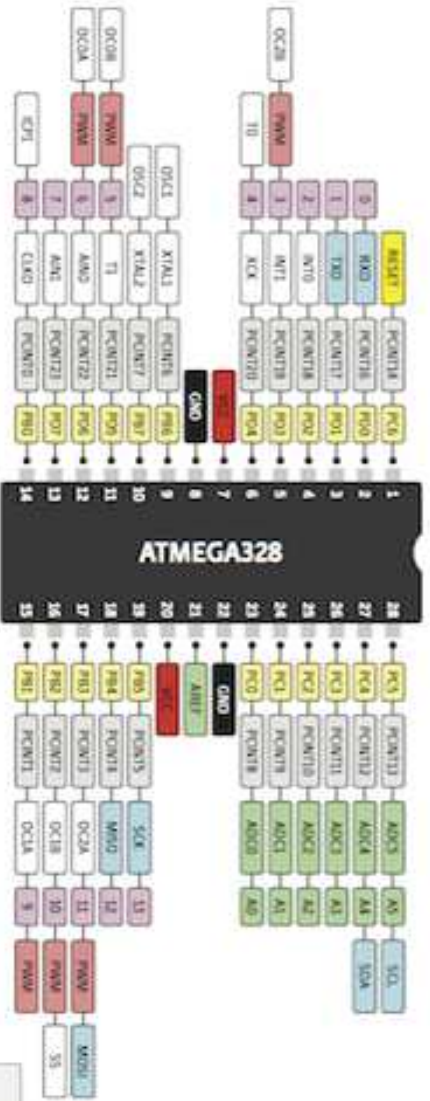
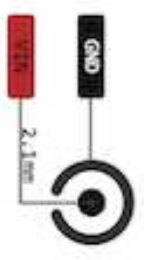


THE DEFINITIVE

# ARDUINO UNO PINOUT DIAGRAM



7-12V Depending on current drawn



Cut to disable the auto-reset



This provides a logic reference voltage for software that use it. It is connected to the 5V bus.

RESET



PCINT14



10KΩ



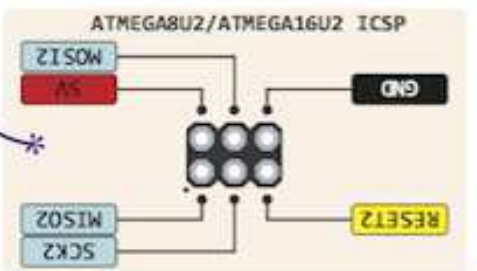
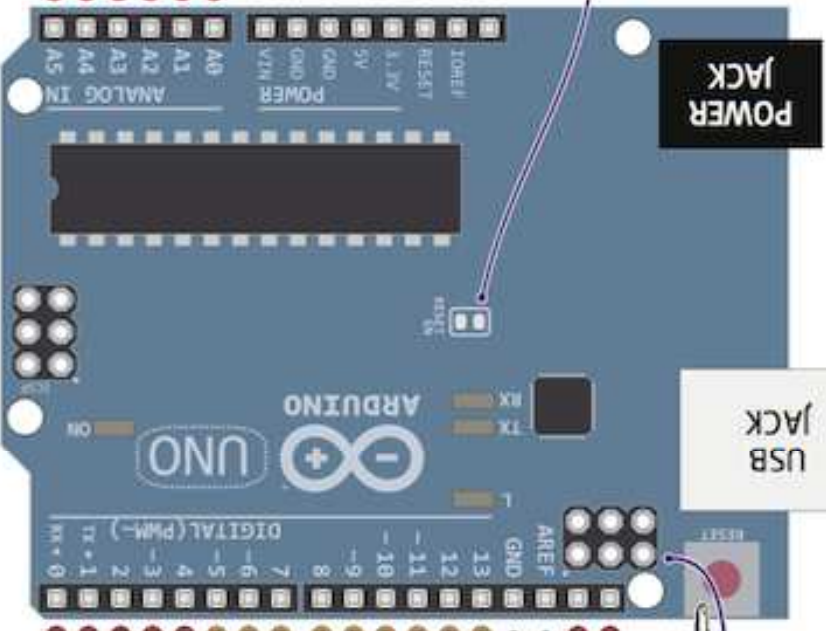
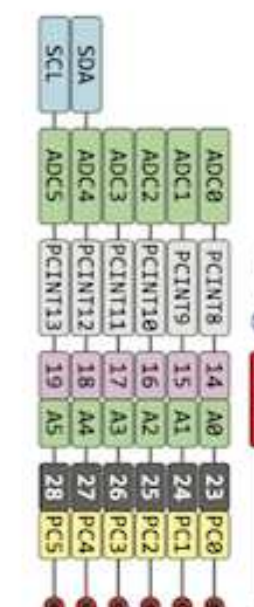
PC6



Not Connected



The input voltage to the Arduino board when it is running from external power. Not USB bus power.



Absolute max per pin 40mA  
Recommended 20mA  
Absolute max 200mA  
for entire package



Connected to the ATmega and used for USB program and communicating with it